

# Connecticut State University Outer Island Education Program Report

Submitted by:

Vincent T. Breslin

Environment, Geography and Marine Sciences

Southern Connecticut State University

March 2020

## Connecticut State University Outer Island Summer Programs

### Outer Island Interns

This year (Summer 2019) three student interns were hired to staff Outer Island and to assist groups with educational programming during their visit to the island. The interns also conducted research activities, including monitoring water quality and fouling, and participated in maintenance activities on the island facilities. This past summer the island interns were Jacob Yankee, Bailey Roy and Maggie Gwozdz. Brief bios were provided by the interns and are included below:

Jacob Yankee is a rising senior at the University of Massachusetts Amherst majoring in Natural Resources Conservation. She always considered Nature as a life-long passion. She enjoys taking walks through the forest and kayaking on the lake outside of my house. Her goal is to work in land conservation. She recently volunteered for the Kestrel Land Trust in Amherst, MA and greatly enjoying it. The protection of nature is something that she deeply cares about.

Bailey Roy is a junior at Central Connecticut State University studying for a B.S. in Biology. In the future she hopes to focus on research in the marine biology as she is very passionate about marine ecosystems, specifically ways to conserve these ecosystems. She has always had an interest in biology and how the mechanics of life on earth work together. Bailey was fortunate enough to take part in a course abroad in the winter of 2019, to Belize and the island of San Pedro, to see the coral reef and the ocean life that inhabits the reef.

Maggie Gwozdz graduated from Central Connecticut State University with a Bachelor's of Science, focusing on Environmental Science and Chemistry. During the summer of 2017, she interned at DEEP in the Water Quality Division, where she ensured that weekly toxicity reports sent by polluting companies were in compliance with their NPDES permits. The following summer, Maggie worked at MDC's Reservoir 6 as a laboratory technician intern, where she conducted several analyses on water samples and monitored the presence of harmful algae in the water supply. She has also been part of a research project at CCSU to monitor the water quality of a stream that runs through the university. She has always felt driven to respect and sustain Earth's resources and non-human inhabitants.

This summer 2019 was the fifth consecutive summer where three interns were hired to provide visitor services on the island. By all measures, having three interns on the island continues to provide improved visitor services and community outreach. Student interns each received a salary processed via CCSU.

### **Schedule of Visitors**

The island interns and Friends of Outer Island estimated a total of 2446 visitors to the island during the summer 2019 (May 25<sup>th</sup> until the island seasonal closing on September 28<sup>th</sup> 2018). Several programs brought large groups of students to Outer Island this past summer. Five New Haven school groups participated in the Nature of Learning program with US Fish & Wildlife (125 visitors). The Walsh Intermediate School, Branford had 12 classes visit the island in the fall for a total of 250 students. For the second consecutive year, Outer Island visits were on the itinerary for the New Haven International Festival of Arts and Ideas. Two visits were scheduled and 54 participants visited the island on June 12<sup>th</sup> and 19<sup>st</sup>.

Those visitors were included in the twenty-one groups that scheduled 38 separate visits during the summer 2019 with an estimated 700 visitors participating in education programs (see attached schedule). Both the number of scheduled groups and the total number of scheduled group visitors to Outer Island in summer 2018 were comparable, but slightly higher, compared to previous years. Many of the scheduled groups have visited the island in previous years. Some of the notable first-time visitors to the island included the Highstead Foundation, New Haven Land Trust Schooner Camp and Arts Escape, Southbury, CT.

The Outer Island Executive Committee awarded the New Haven Land Trust Schooner Summer Camp a grant of \$1,200 in support of their travel to the island to participate in educational programming. USFWS paid for the ferry transport and SCSU paid for the round-trip bus transportation (\$696) to Stony Creek in Branford, CT. The Schooner Camp was able to schedule two trips (7/26 and 8/9) to the island in 2019.

### Outer Island Visitor Schedule 2019

CSCU Escort	Date	Time	Attendance	Organization	Contact	Phone	email
Shaun Roche	3-Jun	10:30 am - 2:00 pm	25	US F&WS Conte School	Shaun Roche		<a href="mailto:Shaun_Roche@fws.gov">Shaun_Roche@fws.gov</a>
Shaun Roche	4-Jun	10:30 am - 2:00 pm	25	US F&WS Hill Central School	Shaun Roche		<a href="mailto:Shaun_Roche@fws.gov">Shaun_Roche@fws.gov</a>
Shaun Roche	5-Jun	10:30 am - 2:00 pm	25	US F&WS King Robinson School	Shaun Roche		<a href="mailto:Shaun_Roche@fws.gov">Shaun_Roche@fws.gov</a>
Shaun Roche	6-Jun	10:30 am - 2:00 pm	25	US F&WS Worthington Hooker School	Shaun Roche		<a href="mailto:Shaun_Roche@fws.gov">Shaun_Roche@fws.gov</a>
Shaun Roche	7-Jun	10:30 am - 2:00 pm	25	US F&WS King Robinson School	Shaun Roche		<a href="mailto:Shaun_Roche@fws.gov">Shaun_Roche@fws.gov</a>
Shaun Roche	10-Jun	9:30 am - 1:00 pm	25	Columbus Academy	Shaun Roche		<a href="mailto:Shaun_Roche@fws.gov">Shaun_Roche@fws.gov</a>
Interns	11-Jun	9:30 am - 1:00 pm	20	St Bridget School	Michelle Carroll		<a href="mailto:mcarroll@stbridgetschool.org">mcarroll@stbridgetschool.org</a>
Interns	12-Jun	4:00 pm - 7:00 pm	15	New Haven Arts & Ideas	Jim Lockhart		<a href="mailto:friendsofouterisland@gmail.com">friendsofouterisland@gmail.com</a>
Shaun Roche	17-Jun	10:30 am - 2:00 pm	25	US F&WS Conte School	Shaun Roche		<a href="mailto:Shaun_Roche@fws.gov">Shaun_Roche@fws.gov</a>
Interns	18-Jun	10:00 am - 2:00 pm	30	Brass City Charter School	Becca Caravello		<a href="mailto:bcaravello@brasscitycharter.org">bcaravello@brasscitycharter.org</a>
Interns	19-Jun	4:00 pm - 7:00 pm	15	New Haven Arts & Ideas	Jim Lockhart		<a href="mailto:friendsofouterisland@gmail.com">friendsofouterisland@gmail.com</a>
Interns	20-Jun	10:30 am - 2:00 pm	10	Highstead Foundation	Spencer Meyer		<a href="mailto:smever@highstead.net">smever@highstead.net</a>
Interns	26-Jun	12:00 pm - 3:00 pm	18	Yale Emerging Infections Program	Amber Maslar		<a href="mailto:amber.maslar@yale.edu">amber.maslar@yale.edu</a>
Interns	29-Jun	4:00 pm - 7:00 pm	15	Tessier Group	Slissa Tessier		<a href="mailto:elissatessier@gmail.com">elissatessier@gmail.com</a>
Interns	6-Jul	10:00 am - 2:00 pm	10	Diane Stark Group	Diane Stark		<a href="mailto:dianstrk@aol.com">dianstrk@aol.com</a>
Interns	11-Jul	9:00 am - 4:00 pm	10	SCSU EVE 537	Vincent Breslin		<a href="mailto:breslinv1@southernct.edu">breslinv1@southernct.edu</a>
Interns	18-Jul	10:30 am - 12:30 pm	10	Highstead Foundation (Redding, CT)	Jody Cologgi		<a href="mailto:jcologgi@highstead.net">jcologgi@highstead.net</a>
Interns	20-Jul	9:30 am - 1:30 pm	12	Watercolor Event	Wiley Carr		<a href="mailto:carrt1@southernct.edu">carrt1@southernct.edu</a>
Interns	26-Jul	9:30 am - 12:00 pm	15	New Haven Land Trust Schooner Camp	Cori Merchant		<a href="mailto:cori.merchant@newhavenlandtrust.org">cori.merchant@newhavenlandtrust.org</a>
Interns	5-Aug	9:00 am - 4:00 pm	8	Arts Escape, Southbury CT	Linda Marino		<a href="mailto:BBButler@artscscape.org">BBButler@artscscape.org</a>

CSCU Escort	Date	Time	Attendance	Organization	Contact	Phone	email
Interns	9-Aug	9:30 am - 12:00 pm	10	New Haven Land Trust Schooner Camp	Cori Merchant		<a href="mailto:cori.merchant@newhavenlandtrust.org">cori.merchant@newhavenlandtrust.org</a>
Interns	14-Aug	2:00 pm - 4:00 pm	12	Friends of Stewart B. McKinney	FOI		<a href="mailto:friendsofouterisland@gmail.com">friendsofouterisland@gmail.com</a>
Island Keeper	16-Aug	10:00 am - 11:30 am	25	Integrated Refugee & Immigrant Services	Laurel McCormack		<a href="mailto:lmccormack@iristct.org">lmccormack@iristct.org</a>
Island Keeper	18-Aug	11:00 am - 2:00 pm	20	FOI Yoga Day	Sally Noel		<a href="mailto:friendsofouterisland@gmail.com">friendsofouterisland@gmail.com</a>
Island Keeper	23-Aug	5:00 pm - 7:00 pm	30	Bill Smith Group	Bill Smith		<a href="mailto:thimbleislandsferry@gmail.com">thimbleislandsferry@gmail.com</a>
Island Keeper	28-Aug	10:00 am - 1:00 pm	15	Shoreline Catholic Academy	Jenny Smith		<a href="mailto:thimbleislandsferry@gmail.com">thimbleislandsferry@gmail.com</a>
Island Keeper	9-Sep	9:00 am - 1:00 pm	25	Walsh Intermediate School	Jeffrey Rizzo		<a href="mailto:jrizzo@branfordschools.org">jrizzo@branfordschools.org</a>
Island Keeper	10-Sep	9:00 am - 1:00 pm	25	Walsh Intermediate School	Jeffrey Rizzo		<a href="mailto:jrizzo@branfordschools.org">jrizzo@branfordschools.org</a>
Island Keeper	11-Sep	9:00 am - 1:00 pm	25	Walsh Intermediate School	Jeffrey Rizzo		<a href="mailto:jrizzo@branfordschools.org">jrizzo@branfordschools.org</a>
Island Keeper	12-Sep	9:00 am - 1:00 pm	25	Walsh Intermediate School	Jeffrey Rizzo		<a href="mailto:jrizzo@branfordschools.org">jrizzo@branfordschools.org</a>
Island Keeper	13-Sep	9:00 am - 1:00 pm	25	Walsh Intermediate School	Jeffrey Rizzo		<a href="mailto:jrizzo@branfordschools.org">jrizzo@branfordschools.org</a>
Island Keeper	15-Sep	10:00 am - 2:00 pm	20	Southeastern CT Kayak Adventurers	Carolyn Van Gemert		<a href="mailto:carolyn.vangemert@yale.edu">carolyn.vangemert@yale.edu</a>
Island Keeper	16-Sep	9:00 am - 1:00 pm	25	Walsh Intermediate School	Jeffrey Rizzo		<a href="mailto:jrizzo@branfordschools.org">jrizzo@branfordschools.org</a>
Island Keeper	17-Sep	9:00 am - 1:00 pm	25	Walsh Intermediate School	Jeffrey Rizzo		<a href="mailto:jrizzo@branfordschools.org">jrizzo@branfordschools.org</a>
Island Keeper	18-Sep	9:00 am - 1:00 pm	25	Walsh Intermediate School	Jeffrey Rizzo		<a href="mailto:jrizzo@branfordschools.org">jrizzo@branfordschools.org</a>
Island Keeper	19-Sep	9:00 am - 1:00 pm	25	Walsh Intermediate School	Jeffrey Rizzo		<a href="mailto:jrizzo@branfordschools.org">jrizzo@branfordschools.org</a>
Island Keeper	20-Sep	9:00 am - 1:00 pm	25	Walsh Intermediate School	Jeffrey Rizzo		<a href="mailto:jrizzo@branfordschools.org">jrizzo@branfordschools.org</a>
Island Keeper	23-Sep	9:00 am - 1:00 pm	25	Walsh Intermediate School	Jeffrey Rizzo		<a href="mailto:jrizzo@branfordschools.org">jrizzo@branfordschools.org</a>
Island Keeper	24-Sep	9:00 am - 1:00 pm	25	Walsh Intermediate School	Jeffrey Rizzo		<a href="mailto:jrizzo@branfordschools.org">jrizzo@branfordschools.org</a>
Island Keeper	26-Sep	9:00 am - 1:00 pm	25	Walsh Intermediate School	Jeffrey Rizzo		<a href="mailto:jrizzo@branfordschools.org">jrizzo@branfordschools.org</a>
Island Keeper	27-Sep	9:00 am - 1:00 pm	25	Walsh Intermediate School	Jeffrey Rizzo		<a href="mailto:jrizzo@branfordschools.org">jrizzo@branfordschools.org</a>

## Research Activities

### Water Quality Monitoring

Water quality parameters were monitored by the CSU interns during the summer 2019 from June 9<sup>th</sup> to August 12<sup>th</sup>. Water quality monitoring was also conducted by the island keeper Nick Varvel from August 22<sup>nd</sup> to September 21<sup>st</sup>. Water quality monitoring occurred each day at 2:00 pm from the end of the floating dock. Water quality parameters monitored included: water temperature, salinity, conductivity, specific conductance, dissolved oxygen, Secchi disk depth, turbidity, and pH. All measurements were made on water samples collected from at a depth of one meter.

Water temperature gradually increased from the spring to the end of the summer. Water temperature ranged from 16.8°C (6/13) to a high of 24.8°C (8/3). Variations in water temperature over the summer correlated well with changes in measured air temperature (Figure 3). Dissolved oxygen concentrations were highest initially (7.84 mg/L) on 6/9 and showed a decrease over the summer months correlating with increasing temperatures reaching a low of 5.86 mg/L on 8/9 (Figure 1b). With one exception, salinity showed little variability, with a range of only 28.6 ppt (6/9) to 30.5 ppt (9/20), while conductivity showed a slightly larger range from 44.19 mS (6/11) to 46.80 mS (9/20) (Figure 1a). Both parameters showed less variability than in previous years.

Water clarity, as measured by a Secchi disk, varied from 0.7 m (6/10) to 1.6 m (7/17) during the monitoring period (Figure 2a). pH ranged from a low of 7.82 (7/13) to a high of 8.32 (9/20) (Figure 2b). Similar to other parameters this season, water clarity/turbidity and pH showed less variation than previous years. The water quality monitoring raw data and graphs will be available online in the redesigned Research section of the Outer Island website.

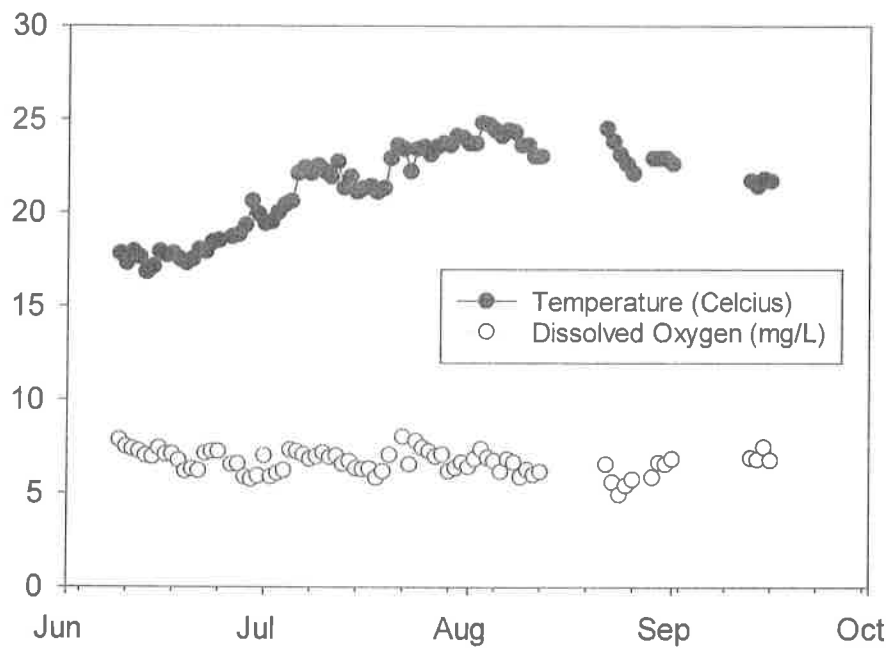
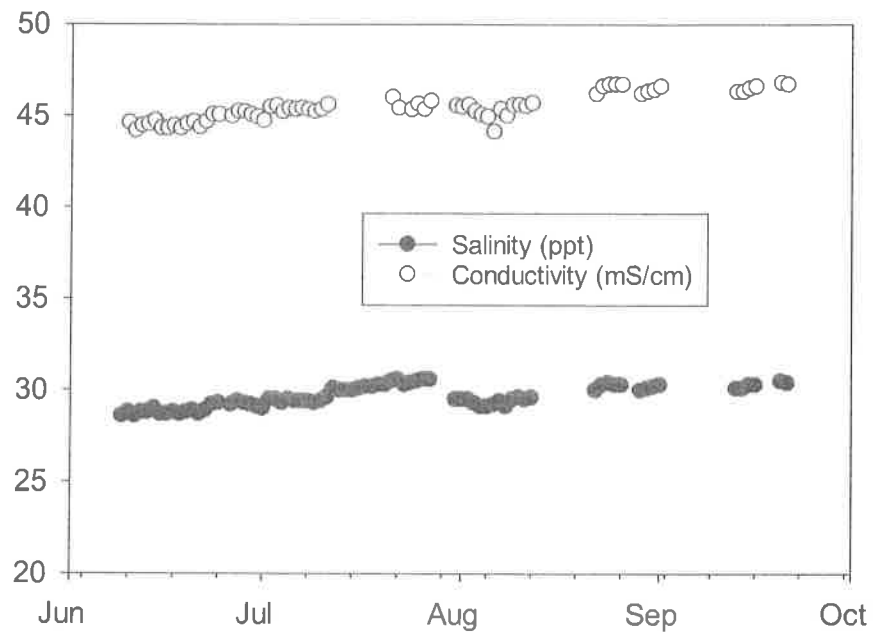


Figure 1. Outer Island 2019 water quality monitoring results: (a) salinity and conductivity and (b) temperature and dissolved oxygen.

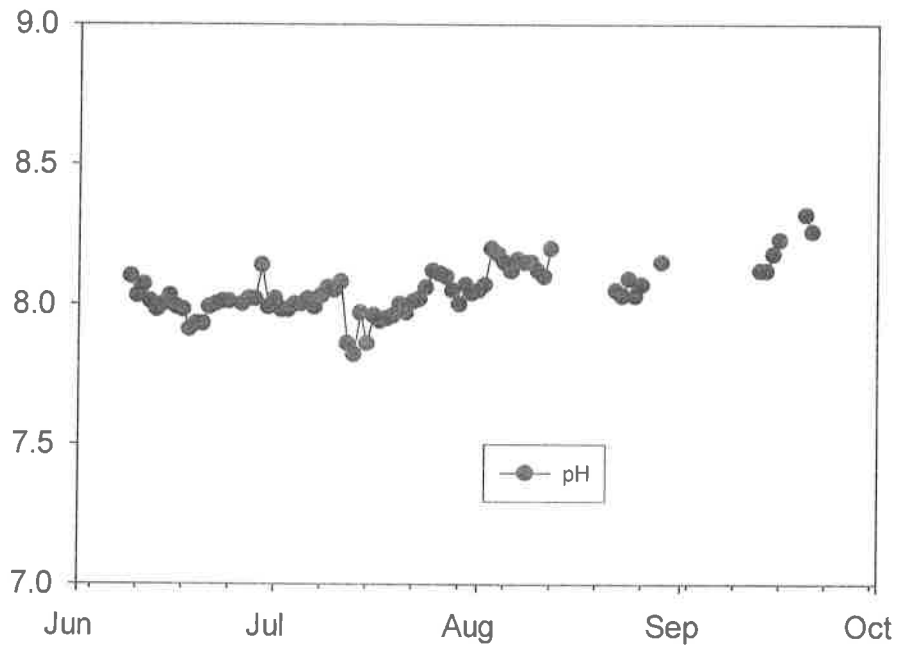
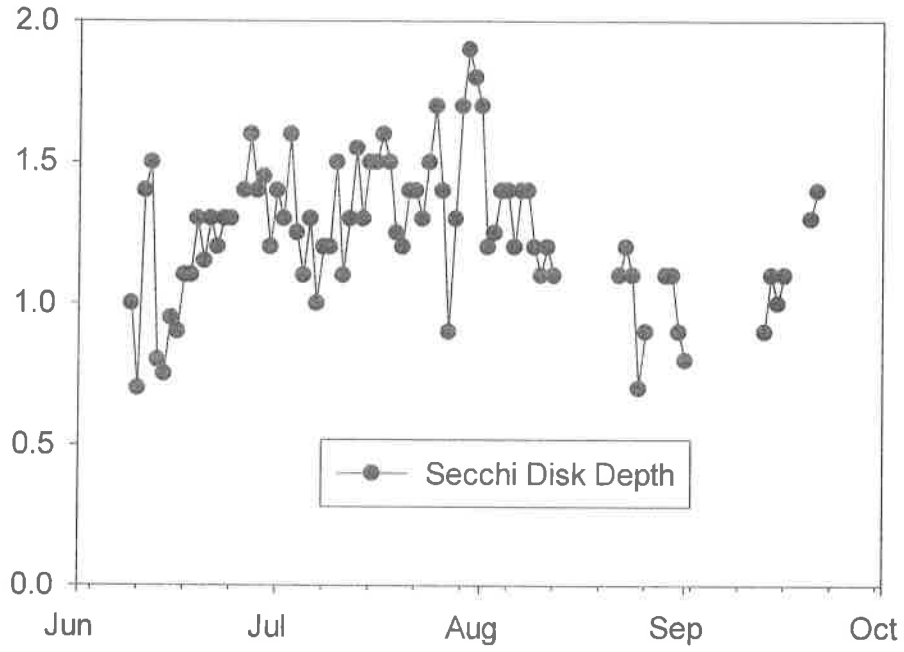


Figure 2. Outer Island water quality monitoring results: (a) secchi disk depth and (b) pH.



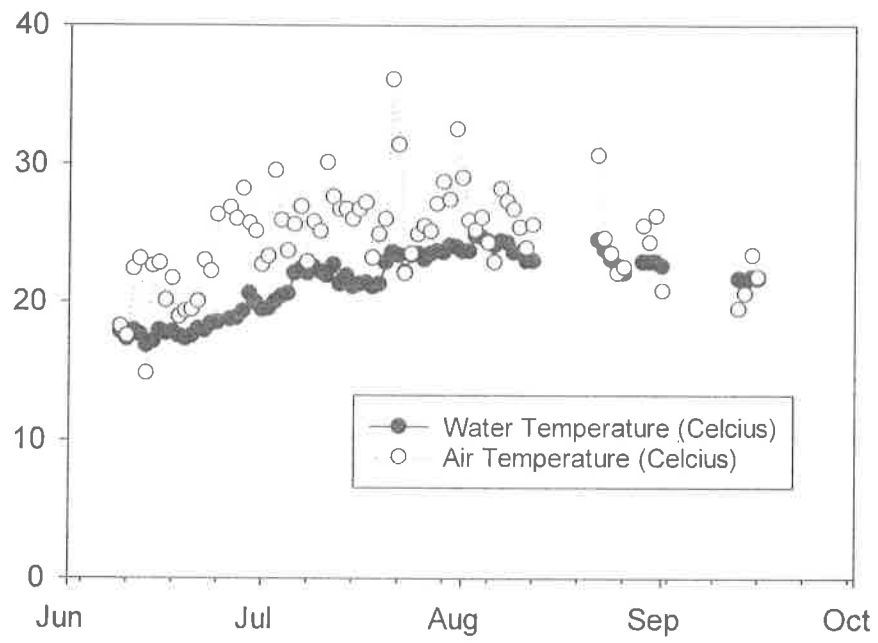


Figure 3. Outer Island water quality monitoring results: water and air temperature.



## **Water Quality and Supplies for Education Programs**

Additional supplies were purchased in support of the water quality monitoring and education programs. A beta water sampling bottle repair kit and environmental quality meters (light meter, pH pen, optical salinometer, weather meter) were purchased to replace older, poorly functioning equipment. A new YSI Pro 30 conductivity/temperature/salinity meter was purchased to replace older equipment in the water quality studies.

A large 6' x 4' dry erase whiteboard was purchased (\$912) to replace the very old display whiteboard used by the interns to display information and daily tides for visiting guests. Other educational supplies included a small floor standing whiteboard (30" x 40"), pH paper, binoculars, clipboards, sediment sieves, and batteries. These supplies supplement previously purchased supplies to be used in support of visiting groups and educational programming.

## **Outer Island Website Update**

We continue to revise the Outer Island website ([www.outerisland.org](http://www.outerisland.org)) to create a more informative, user friendly interface for Outer Island information and educational programming. The Outer Island website is hosted on iPage ([www.iPage.com](http://www.iPage.com); recently renewed; now terms February 2021). Undergraduate computer science student Robert Orozco worked on the Outer Island website this past year (Honorarium \$1,500). Robert posted additional content to the website during the summer 2019. Improvements to the website include:

- Re-establishing the camera video streams to the homepage
- Posting of the 2018 water quality data and attendance records,
- Posting of summer 2019 intern photos and bios, and
- Resources for LIS educators

Robert Orozco will be contracted once again to continue website 2020 updates. Planned tasks include posting the bios for the 2020 interns, posting annual reports, attendance records and water quality data.

## **AT&T Wireless Account**

The AT&T wireless account used in support of the Outer Island WeatherBug station and video cameras now supports three wireless lines transmitting data and images. Two of the lines support the cameras and WeatherBug weather data and the third line supports the Wifi hotspot. The wireless hot spot allows internet access to the student interns and teachers providing educational programming on the island. The data plan was increased over the summer to 20 GB during the summer months to accommodate increased usage by the students. Data usage was not well managed during the summer 2019 and the interns frequently accrued overage charges for internet usage. These overages occurred in spite of constant reminders to stay within the data usage limits. At the end of the summer, the data plan was modified (10/19) to reduce (9 GB) the data on the plan to reduce the account charges at times of low data usage (October-May). The line for the Wifi was also suspended in October and will be activated once again in the spring. The plan was also reimbursed charges on the November bill as AT&T retroactively made changes to the plan.

For summer 2020, the data plan will once again be increased to 20 GB in May and the Wifi hot spot will be activated. To assure limited overage charges, the account settings have now been revised to have the data transfer rate automatically decrease once the 20 GB limit has been reached. AT&T broadband access fees for the wireless for the 12 month service period from April 2019 to February 2020 totaled \$1,901.

## **WeatherBug Station, Web Cameras and Remote Video Capabilities**

Overall, the WeatherBug weather station has been performing well. A new High Definition camera and 5 year maintenance contract was purchased and installed in spring 2017 (\$6,000). The camera replaced an older, poorly functioning camera. The two cameras now provide high quality video from west looking over the marsh and east with a view of the dock.

We did experience issues with accessing weather data and the camera views for extended periods in the Spring of 2019. Scott Graves had several conversations with Earth Networks

technicians to identify the problem. The problem was not a hardware issue with the cameras, rather the issue was with AT&T wireless no longer supporting the technology used to get the data and images off the island. A new router was purchased and installed and we have enjoyed uninterrupted video and data service for the past 8 months. The camera views and access to the WeatherBug weather data are now available once again on the [www.outerisland.org](http://www.outerisland.org) website. At present, the west facing video camera was turned to face landward during a wind storm in the fall 2019. The camera mount will be stabilized and reinforced once we gain access to the island in the spring 2020.

### **Outer Island Watercolor Workshop/Art Experience**

The 5<sup>th</sup> watercolor workshop on Outer Island conducted by Wiley Carr was held on July 20<sup>th</sup> 2019. The workshop was enrolled to capacity (12 participants) with seven of the participants visiting the island for the first time. By all measures the event was a success. Many positive comments were received and Professor Carr is excited to host the event again in the summer 2020. SCSU purchased art supplies using grant funds (\$358) in support of the event. A summary report describing the Watercolor Day on Outer Island submitted by Wiley Carr is appended to this report.

SCSU Outer Island Funds Request 2019-2020			
Category	Requested Funds		Disbursed Funds
<b>Personnel</b>			
Student Stipend (150 hours @ \$10.10/hour)	\$1,515.00		1,500
Website maintenance (Undergraduate Student)			
Student Tuition (3 credits)	\$0.00		0
Faculty Stipend Scott Graves (Summer 2019)	\$1,000.00		1000
Faculty Stipend T. Wiley Carr (Summer 2019)	\$1,000.00		1000
Faculty Stipend Scott Graves (Summer 2019) (62.7%)	\$721.80		721.8
Faculty Stipend T. Wiley Carr (Summer 2019) (20.4%)	\$231.80		231.8
<b>Total Personnel</b>	<b>\$4,468.60</b>		<b>4,454 4,454</b>
<b>Supplies</b>			
<b>Water Quality, Weather Meters</b>		Pro 30 Cond meter 31-Jul	1096
		Water quality equip 31-May	1161.71
		Netcloud Router 16-Jul	501.89
		Island Whiteboard 14-May	912.23
<b>Art Supplies</b>		Art supplies 21-Jun	358.98 4,031
<b>Laboratory and field supplies</b>		Misc supplies	1333.63 1,334
<b>FOI Equipment request</b>	<b>\$1,000.00</b>		18-Apr 463.98
Binoculars, spotting scope, throw net, pH paper		3-May	704.6 1,169
<b>Travel (in State)</b>			
Ferry Tickets to Outer Island	\$2,400.00		1200
Schooner Summer Camp trip bus charter			696 1,896
<b>Other</b>			
Annual AT&T Broadband Access fees	\$1,800.00	March	89.09
		April	89.09
		May	89.09
		June	106.64
		July	360.97
		Aug	272.64
		Sept	272.64
		Oct	377.64
		Nov	-32.36
		Dec	70.13
		Jan	102.49
		Feb	102.49 1,901
<b>Total Funds Requested 2019-2020</b>	<b>\$15,000.00</b>		<b>\$14,784</b>

## Outer Island Executive Committee awards the New Haven Land Trust a \$1,200 Grant!



The Outer Island Executive Committee voted to award the New Haven Land Trust \$1,200 to support bringing kids from Schooner Summer Camp to Outer Island during the summer of 2019. Outer Island is an ecological preserve and refuge for migratory birds off the coast of Branford, Connecticut. The island has a number of different habitats, including a rocky intertidal zone, marsh, and beach. These exemplify the Long Island Sound shoreline environments. This grant will allow the campers to learn about distinctive flora and fauna that reflect a unique natural environment. Please join us in thanking The Outer Island Executive Committee for their generosity and commitment to youth programming.

*Learn more about Outer Island [here!](#)*



New Haven Land Trust

203.852.6186

info@

newhavenlandtrust.org

217 Grand Avenue Suite 102  
New Haven, CT 06511

---

To Vince & the OI Executive Committee

Sending a huge thank you to everyone for providing funds for such a special opportunity for our teens at Schooner Camp. They had some great trips to the island full of learning, exploring and building science skills.

Best,  
Com Merchant  
Camp Dir.





Date: 22 July 2019

To: Vincent Breslin  
Professor  
Department of the Environment, Geography and Marine Sciences  
Co-Coordinator, Werth Center for Coastal and Marine Studies  
Academic Science and Laboratory Building 207B

From: T. Wiley Carr  
Professor of Art

Re: Final Report, Outer Island Watercolor Workshop 2019

Dear Vince,

The 5th Watercolor Workshop on Outer Island on July 20 was a great success. Even with extremely hot & humid weather throughout Connecticut, Outer Island was pleasant and breezy for the duration of our experience. The workshop was enrolled to capacity, 12 participants, and remains a popular event. Enrollment was full within six hours of the SCSU email announcement; It was also promoted by the Friends of Outer Island on their Facebook page.

Seven of the twelve participants were visiting Outer Island for the first time. Participants found the experience to be educational, enjoyable and informative. It reflected well on SCSU and our programs.

I am attaching the information distributed to participants, which outlines materials utilized. I'm also attaching one of several emails received, and the promotional page that I generated.

Please let me know if I can provide additional information; The grant-funding is deeply appreciated by myself and all of the participants.

Respectfully,

A handwritten signature in purple ink, appearing to read 'T. Wiley Carr', with a long horizontal flourish extending to the right.

T. Wiley Carr  
Professor of Art  
Printmaking/Painting/Drawing  
Southern Connecticut State University

(203) 392-6636

Watercolor workshop      Outer Island  
Prof. T. Wiley Carr, SCSU

July 20 2019

First and foremost, ENJOY Outer Island!    Tides: Low 8:09am    High 2:26pm  
The tide will be *rising* during our visit

Introductions -

Step-by-Step

Measuring

Masking

Wet to Dry

Light to Dark - preserving lights

Graded wash

Flat wash

Layering colors and washes

Mixing neutrals ("blacks") with complementary colors

\*\*\*\*\*

About your paper **today**- **Arches** (France) 140-pound bright white *hot* press (smooth) and **Fabriano** (Italy) natural white *cold* press (rough). Cut from full sheets of 22" x 30". 100% cotton! acid-free. Common weights: 90# (*thinnest*) 140#, 200#, #300 and up (**thick**)

Other *good* brands include Strathmore (USA), Canson (France) Bockingford (England)  
Available in pads, sheets and 'blocks' -

About your watercolors **today**- **Yarka** brand (Russian) pans, non-toxic. Yarka watercolors available in 24-color professional pan sets, 3 different sets - 72 colors total. Many other brands available in tubes, and cakes and pan sets. Look for 'shiny when dry' quality with pan sets (gum arabic).

Other *good* brands are Winsor & Newton (England), Daniel Smith (tubes) (USA), Prang pans (USA)

About your brushes **today** - *Royal & Langnickel* scholastic synthetic - Synthetic vs. natural hair considerations include cost, water loading, firmness and maintenance, 'sable'/kolinsky. Other brands - seemingly endless - I often get *Princeton* brand brushes at Ocean State Job Lot!

For art supplies I most often use *Dick Blick Art Supply* mail order.

Feel free to contact me by email at [CARRT1@southernct.edu](mailto:CARRT1@southernct.edu)

**Subject:** Watercolor Workshop on Outer Island  
**Date:** Monday, July 8, 2019 at 2:53:42 PM Eastern Daylight Time  
**From:** announce-campus on behalf of SCSU Announcements  
**To:** announce-campus@lists.southernct.edu  
**Priority:** High  
**Attachments:** ATT00001.txt

On Saturday, July 20, from 9:30 a.m.-1:30 p.m., Professor of Art T. Wiley Carr will be conducting a watercolor painting workshop on Outer Island in Stony Creek/Branford (weather permitting). The watercolor workshop is sponsored by SCSU in partnership with the U.S. Fish and Wildlife Service.

Space is limited, and on-line registration

<https://www.eventbrite.com/e/outer-island-watercolor-workshop-tickets-64174993132>

is required with a \$15 donation (which covers the cost of the ferry trip). The workshop is otherwise free, open to the public, and suitable for all levels of ability. All materials will be provided. Any inquiries can be emailed to Professor T. Wiley Carr at [carrt1@southernct.edu](mailto:carrt1@southernct.edu)

For more information on Outer Island and its programs, please visit [www.outerisland.org](http://www.outerisland.org)

~~~~

T. Wiley Carr  
Professor of Art  
Painting & Printmaking  
Art Department / Earl Hall 111  
Southern Connecticut State University  
501 Crescent Street, New Haven, CT 06515  
Office: Printshop, Earl Hall 102C / 203-392-6636



## Outer Island Watercolor Workshop

by T. Wiley Carr

[Follow](#)

\$15

Sales Ended

[Details](#)

### Description

Explore the beauty of Outer Island in Stony Creek, Branford - while learning the basic techniques of watercolor! Conducted by Prof. T. Wiley Carr of the Southern Connecticut State University Art Department, the event is suitable for beginners and all levels of ability; all materials will be provided. The workshop is free; there is a required \$15 donation which covers the cost of ferry transportation. Bring a sack lunch, (and perhaps an extra bottle of water.) Ample time allotted for exploring, sketching and painting... in a relaxing and beautiful atmosphere.

The ferry to Outer Island will leave the Stony Creek Dock promptly at 9:30am, and return from the Island at approximately 1:30pm. Parking is available at the Town Dock, along Thimble Island Road, or in the Church of Christ parking lot (small fee). This workshop is sponsored by Connecticut State University/SCSU Werth Center for Coastal and Marine Studies, in cooperation with the Stewart B. McKinney National Wildlife Refuge.

Limited to 12 participants.

### Date And Time

Sat, July 20, 2019

9:30 AM - 1:30 PM EDT

[Add to Calendar](#)

### Location

Outer Island / Stony Creek Dock

4 Indian Point Road

Thimble Islands

Stony Creek, CT 06405

[View Map](#)

**Subject:** Fwd: Many Thanks

**Date:** Sunday, July 21, 2019 at 11:32:47 AM Eastern Daylight Time

**From:** T. Wiley Carr

**To:** Carr, T. W.

Hello from my iPhone

Begin forwarded message:

**From:** "Trombly, Christopher E." <[tromblyc1@southernct.edu](mailto:tromblyc1@southernct.edu)>

**Date:** July 20, 2019 at 9:11:23 PM EDT

**To:** "T. Wiley Carr" <[twileyc@mac.com](mailto:twileyc@mac.com)>

**Subject:** Many Thanks

Wiley,

Many thanks for a thoroughly enjoyable day, today. Everything was perfect - not least, your clear, informative, encouraging instruction.

Cordially and with gratitude,

Christopher

Christopher E. Trombly, Ph.D.

Assistant Professor, Educational Leadership & Policy Studies

Program Coordinator, 6th Year Professional Diploma with 092 Certification

Southern Connecticut State University

Cell: 339-236-4475; Office: 203-392-5989

TE-6, Room 108

501 Crescent Street

New Haven, CT 06515

Monday, July 22, 2019 at 10:24:27 AM Eastern Daylight Time

---

**Subject:** Re: Outer Island Watercolor Workshop 7/20

**Date:** Saturday, July 20, 2019 at 8:44:41 PM Eastern Daylight Time

**From:** Lancor, Lisa B.

**To:** Carr, T. W.

Thanks for a wonderful day, Wiley. It was a an absolutely wonderful outing. Your presentation and organization was top notch. Ally and I are already looking forward to the next one. Many thanks for including me.

I hope you found a cool spot for the afternoon.

My Best,

—Lisa

\*\*\*\*\*

Dr. Lisa Lancor, Chairperson  
Computer Science Department  
Southern Connecticut State University  
501 Crescent Street  
New Haven, CT 06515  
+1-203-392-5890